

JET wood lathes

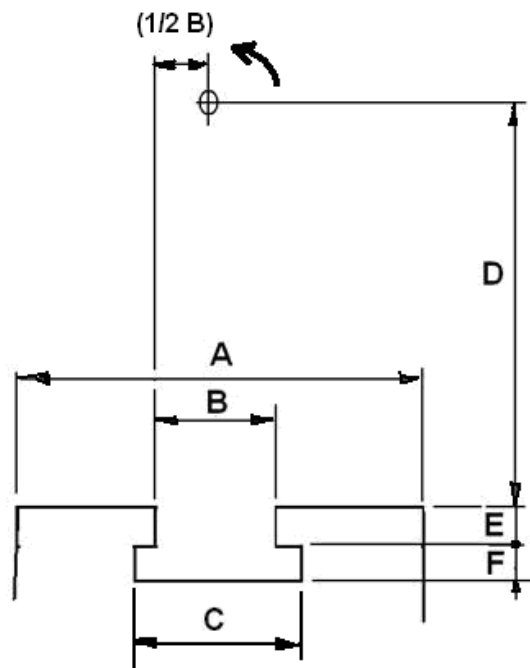
- bed dimensions and centre heights

JET Drehselbänke

- Bettabmessungen und Spitzenhöhen

Tours à bois JET

- dimensions du banc et hauteur des pointes



**JWL-1440VS-M:**

A: 180mm  
B: **45.00 +0.02/ +0.05mm**  
C: 64mm  
D: **185 ±0.05mm**  
E: 16 +0.0/ +0.2mm  
F: 34mm

**JWL-1442:**

A: 175mm  
B: **45.00 +0.02/ +0.07mm**  
C: 64mm  
D: **177.8 +0.0/ +0.1mm**  
E: 16 +0/ +0.2mm  
F: 34mm

**JWL-1640EVS-M:**

A: 180mm  
B: **45.00 +0.02/ +0.05mm**  
C: 64mm  
D: **210 ±0.02mm**  
E: 16 +0.0/ +0.2mm  
F: 34mm

**JWL-1642:**

A: 175mm  
B: **45.00 +0.02/ +0.07mm**  
C: 64mm  
D: **203.2 +0.0/ +0.1mm**  
E: 16 +0/ +0.2mm  
F: 34mm

**JWL-1840EVS-M:**

A: 180mm  
B: **45.00 +0.02/ +0.05mm**  
C: 64mm  
D: **236 ±0.02mm**  
E: 16 +0.0/ +0.2mm  
F: 34mm

**3520 / 3520B**

A: 203mm  
B: **63.5 +0.02/ +0.05mm**  
C: 101mm  
D: **260.4 +0.0/ +0.1mm**  
E: 14 ±0.1mm  
F: 41mm

**JWL-2035-M:**

A: 203mm  
B: **63.5 +0.02/ +0.05mm**  
C: 101mm  
D: **260.4 +0.0/ +0.1mm**  
E: 14 ±0.1mm  
F: 41mm

**4224**

A: 220mm  
B: **63.5 +0.02/+0.1mm**  
C: 110mm  
D: **305 +0.0/ +0.1mm**  
E: 30 ±0.3mm  
F: 40mm

**4224B**

A: 228mm  
B: **63.5 +0.02/+0.05mm**  
C: 106mm  
D: **305 ±0.02mm**  
E: 16 ±0.1mm  
F: 40mm