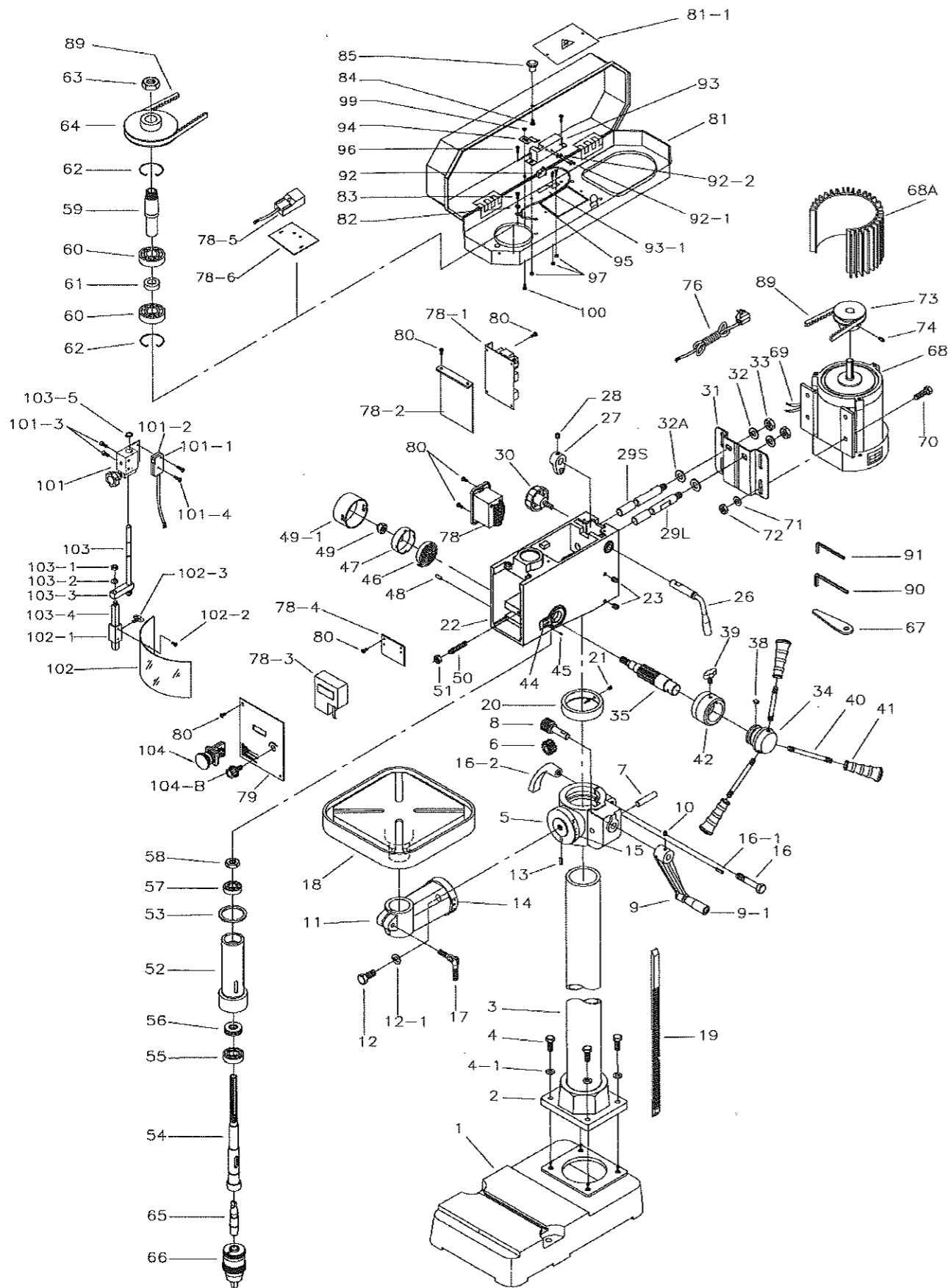


Parts Breakdown For JDP-378VB Drill Press



Parts List For JDP-378VB Drill Press

| Index No. | Part No. | Description / Beschreibung / Description | Qty |
|-----------|--------------|--|-----|
| 1 | JDP378VB-001 | Base / Fuß / Pied | 1 |
| 3 | JDP378VB-003 | Flange w. Column / Flansch u. Säule / Flaque et Colonne (2, 3) | 1 |
| 4 | PM378004 | Bolt / Schraube / Vis | 4 |
| 4-1 | PM374202 | Spring Washer / Federring / Rondelle | 4 |
| 5 | JDP378VB-005 | Table Bracket / Säulenflansch / Flaque de colonne | 1 |
| 6 | PM374006 | Gear / Zahnrad / Engrenage | 1 |
| 7 | PM374007 | Shaft / Bolzen / Axe | 1 |
| 8 | PM374008 | Worm / Schneckenwelle / Axe avec vis sans fin | 1 |
| 9 | PM374009 | Table Crank w. handle/ Kurbel u Griff/ Levier complet (9, 9-1) | 1 |
| 10 | PM374010 | Set Screw / Inbusschraube / Vis | 1 |
| 11 | JDP378VB-011 | Table Arm Bracket / Tischarm / Bras de table | 1 |
| 12 | PM374012 | Bolt / Schraube / Vis | 1 |
| 12-1 | PM374203 | Spring Washer / Federring / Rondelle | 1 |
| 13 | PM374013 | Pin / Schwertschraubstift / Goupille | 1 |
| 14 | PM374014 | Scale / Skala / Réglette | 1 |
| 15 | PM374015 | Angle Scale / Skala / Réglette | 1 |
| 16 | PM378016 | Clamp Bolt / Schraube / Vis | 1 |
| 16-1 | PM378216 | Pin / Stift / Goupille | 1 |
| 16-2 | PM378316 | Clamp Handle / Klemmhebel / Levier de blocage | 1 |
| 17 | PM33068 | Table Bolt / Klemmschraube / Vis de blocage | 1 |
| 18 | JDP378VB-018 | Table swivel type / Tisch schwenkbar / Table inclinable | 1 |
| 19 | PM374019 | Rack / Zahnstange / Crémaillère | 1 |
| 20 | PM419040 | Rack Ring / Haltering / Rondelle | 1 |
| 21 | PM374021 | Set Screw / Gewindestift / Vis sans tete | 1 |
| 22 | JDP378VB-022 | Head Body / Kopfgehäuse / Tête | 1 |
| 23 | PM374023 | Set Screw / Gewindestift / Vis sans tete | 2 |
| 26 | PM374026 | Shifter handle/ Verstellhebel / Levier | 1 |
| 27 | PM374027 | Shifter / Exzenter / Excentrique | 1 |
| 28 | PM374028 | Set Screw / Gewindestift / Vis sans tete | 1 |
| 29L | PM374206 | Slide Bar (L) / Welle / Axe | 1 |
| 29S | PM374207 | Slide Bar (S) / Welle / Axe | 1 |
| 30 | PM374030 | Lock knob / Klemmgriff / Molette | 1 |
| 31 | JDP378VB-031 | Motor Base / Motorplatte / Plaque moteur | 1 |
| 32 | PM374032 | Spring Washer / Federring / Rondelle | 2 |
| 32A | PM378032A | Washer / Scheibe / Rondelle | 2 |
| 33 | PM374033 | Nut / Mutter / Ecrou | 2 |
| 34 | PM378534 | Handle Body / Bohrgriff Nabe / Flaque | 1 |
| 35 | PM378534 | Feed Shaft / Griffachse / Axe | 1 |
| 38 | PM374038 | Scale Guider / Skalenführung / Guidage de réglette | 1 |
| 39 | PM374039 | Stop Knob / Feststellschraube / Vis de fixation | 1 |
| 40 | PM33117 | Feed Handle / Griffstange / Levier | 3 |
| 41 | PM378041 | Grip / Griffknopf / Poignée | 3 |
| 42 | PM363042 | Scale Ring / Skalenring / Vernier | 1 |
| 44 | PM374044 | Scale index / Anzeiger / Index | 1 |
| 45 | PM374045 | Rivet / Niete / Rivet | 1 |
| 46 | PM33014 | Spring / Rückzugsfeder / Ressort | 1 |
| 47 | PM33014 | Spring Cap / Federdeckel / Couvercle de ressort | 1 |

Parts List For JDP-378VB Drill Press

| Index No. | Part No. | Description / Beschreibung / Description | Qty |
|-----------|---------------|---|-----|
| 48 | PM374048 | Pin / Stift / Goupille | 1 |
| 49 | PM374049 | Nut / Mutter / Ecrou | 1 |
| 49-1 | PM378249 | Feed Shift Cover / Deckel / Couvercle | 1 |
| 50 | PM374050 | Screw / Schraube / Vis | 1 |
| 51 | PM374051 | Nut / Mutter / Ecrou | 1 |
| 52 | PM378552 | Spindle complete/ Spindel komplett / Broche complet (52-58) | 1 |
| 53 | JDP378VB-053 | Rubber Washer / Gummiring / Rondelle | 1 |
| 59 | PM374059 | Spindle Sleeve / Spindelhülse / Axe poulie | 1 |
| 60 | PM375060 | Ball Bearing / Kugellager / Roulement | 2 |
| 61 | PM374061 | Collar / Büchse / Palier | 1 |
| 62 | PM374062 | Snap Ring / Seegering / Circlip | 2 |
| 63 | PM364063 | Pulley Nut / Spindelmutter / Ecrou | 1 |
| 64 | PM378564 | Spindle Pulley / Spindel Riemenscheibe / Poulie broche | 1 |
| 65 | 10009164 | MT2-B18 Adapter / MK2-B18 Adapter / Adaptateur CM2-B18 | 1 |
| 66 | 10009457 | 16mm keyless chuck / Schnellspannbohrfutter / Mandrin autoserrant | 1 |
| 67 | 944477 | Drift key / Austreibkeil / Chasse cone | 1 |
| 68 | JDP378VB-068 | Motor / Motor / Moteur (M1) | 1 |
| 68A | JDP378VB-068A | Motor-Aluminium Cover / Motorabdeckung / Couvercle moteur | 1 |
| 69 | JDP378VB-069 | Motor Cord / Motorkabel / Cable du moteur | 1 |
| 70 | PM374070 | Bolt / Sechskantschraube / Vis | 4 |
| 71 | PM374071 | Washer / Scheibe / Rondelle | 4 |
| 72 | PM374072 | Nut / Mutter / Ecrou | 4 |
| 73 | PM378573 | Motor Pulley / Motorriemen / Poulie moteur | 1 |
| 74 | JDP378VB-074 | Grub screw / Gewindestift / Vis sans tete | 1 |
| 76 | 200034 | Power cord / Netzkabel / Cable d'alimentation | 1 |
| 78 | PM378578 | Switch / Schalter / Interrupteur (KA1, SB1, SB2) | 1 |
| 78-1 | PM378578-1 | Speed Control board / Antriebsplatine / Variateur | 1 |
| 78-2 | PM378578-2 | Support / Halter / Support | 1 |
| 78-3 | PM378578-3 | RPM Display Unit / Drehzahlanzeige / Affichage numerique (DRO) | 1 |
| 78-4 | PM378578-4 | Support / Halter / Support | 1 |
| 78-5 | PM378578-5 | Toggle switch / Schalter / Interrupteur | 1 |
| 78-6 | PM378578-6 | Switch board cover / Abdeckung / Couvercle | 1 |
| 79 | JDP378VB-079 | Front cover / Frontschild / Couvercle | 1 |
| 80 | PM32004 | Screw / Schraube / Vis | 2 |
| 81 | JDP378VB-081 | Pulley Cover / Riemenabdeckung / Capot courroie | 1 |
| 81-1 | PM378581-1 | Rear Pully Cover / Deckel / Couvercle | 1 |
| 82 | PM374082 | Washer / Scheibe / Rondelle | 4 |
| 83 | PM374083 | Screw / Schraube / Vis | 4 |
| 84 | PM374084 | Pulley Cover Screw / Schraube / Vis | 1 |
| 85 | JDP378VB-085 | Pulley Cover Knob / Griff / Poignée | 1 |
| 89 | PM378589 | V-Belt / Keilriemen / Courroie | 1 |

Parts List For JDP-378VB Drill Press

| Index No. | Part No. | Description / Beschreibung / Description | Qty |
|-----------|--------------|---|-----|
| 90 | JDP378VB-090 | Allen Wrench / Inbusschlüssel / Clé à six pans creux 5mm | 1 |
| 91 | JDP378VB-091 | Allen Wrench / Inbusschlüssel / Clé à six pans creux 4mm | 1 |
| 92 | PM366292 | Micro switch / Mikroschalter / Interrupteur micro (SQ1) | 1 |
| 92-1 | PM378092-1 | Screw / Schraube / Vis | 2 |
| 92-2 | PM378092-2 | Nut / Mutter / Ecrou | 2 |
| 93 | PM366293 | Cover / Abdeckung / Couvercle | 1 |
| 93-1 | PM366293-1 | Spring / Feder / Ressort | 1 |
| 94 | PM366294 | Clutch / Kupplung / Embrayage | 1 |
| 95 | PM378095 | Micro Switch Wire / Schalterkabel / Cable | 1 |
| 96 | PM378096 | Screw / Schraube / Vis | 1 |
| 97 | PM378097 | Nut / Mutter / Ecrou | 1 |
| 98 | PM378098 | Cable support / Kabelhalter / Porteur | 1 |
| 99 | PM378099 | Nut / Mutter / Ecrou | 1 |
| 100 | PM378100 | Screw / Schraube / Vis | 1 |
| 101 | PM378101 | Micro Switch Bracket / Schalterhalterung / Support | 1 |
| 101-1 | PM378101-1 | Micro Switch / Mikroschalter / Interrupteur micro (SQ2) | 1 |
| 101-2 | PM378101-2 | Micro Switch Board Cover / Abdeckung / Couvercle | 1 |
| 101-3 | PM378101-3 | Screw / Schraube / Vis | 2 |
| 101-4 | PM378101-4 | Screw / Schraube / Vis | 2 |
| 102 | PM378102 | Safety Guard transparent/ Schutz transparent / Protection | 1 |
| 102-1 | PM378102-1 | Guide tube / Führungsstück / Guide | 1 |
| 102-2 | PM378102-2 | Screw / Schraube / Vis | 2 |
| 102-3 | PM378102-3 | Lock knob / Klemmgriff / Vis de fixation | 1 |
| 103 | PM378103 | Guard rod compl. / Schutz kompl. / Protection complet (103~103-5) | 1 |
| 103-5 | PM378103-5 | Snap ring / Sicherungsring / Circlip | 1 |
| 104 | PM378104 | Emergency Stop / Not-Aus Schalter / Interrupteur d'urgence (SB3) | 1 |
| 104-B | PM378104-B | Speed-Adjusting Knob / Potentiometer / Potentiomètre (VR) | 1 |

Accessories / Zubehör / Accessoires

| | | | |
|-------|----------|---|-------|
| | 10002086 | Rapid drift key / Kegeldorn-Austreiber / Ejecteur de cône morse | |
| | 10009164 | MT2-B18 Arbor / Kegeldorn / Adaptateur CM2-B18 | |
| | 10009457 | 3~16mm-B18 Keyless chuck / Schnellsp.-Bohrfuter / Mandrin autoserrant | |