

JET

JMG-100

BELT & WHEEL GRINDER

1791294T

3~400V / 50Hz

**PARTS LIST
ERSATZTEILLISTE
LISTE DE PIECES**

Walter Meier (Tool) AG

Tämperlistrasse 5

CH-8117 Fällanden

Switzerland

Phone +41 44 806 47 48

Fax +41 44 806 47 58

jetinfo.eu@waltermeier.com

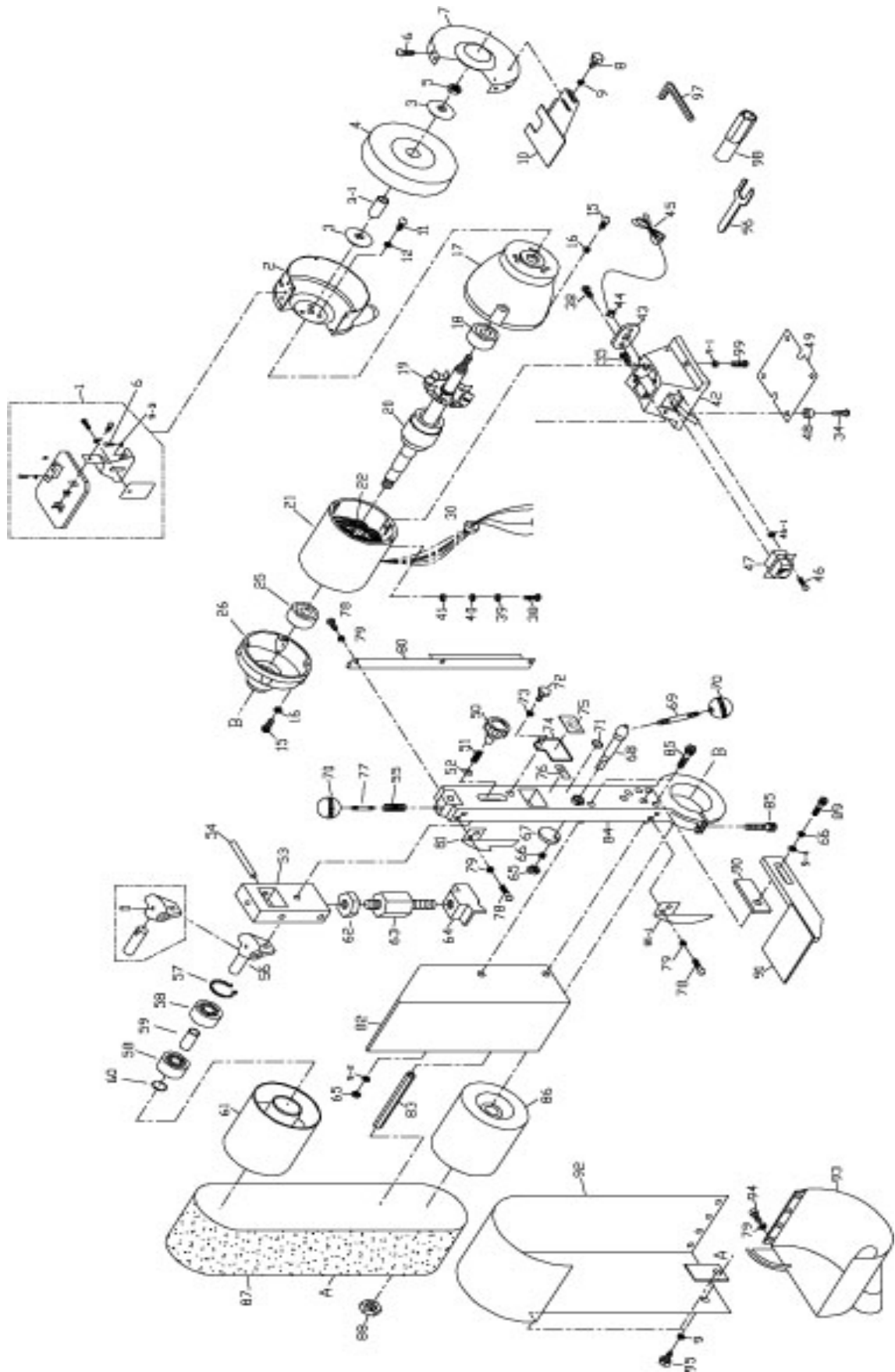
www.jettools.com



P-1791294T

2010-08

Parts Breakdown For JMG-100 Belt & Wheel Grinder



Parts List For JMG-100 Belt & Wheel Grinder

| Index No. | Part No. | Description / Beschreibung / Description | Qty |
|--------------|-------------|---|-----|
| 1 | PM 322401 | Eye shield assly. / Schutzglas / Verre protecteur complet | 2 |
| 2 | PM 322402 | Wheel guard assly / Schleifschutz / Protection incl. Pos. 7-1 | 1 |
| 3 | PM 320008 | Flange / Flansch / Flasque | 2 |
| 3-1 | PM 320007 | Sleeve / Büchse / Chaussette | 2 |
| 4 | | see accessories / siehe Zubehöre / voir accessoires | |
| 5 | PM 320009 | Nut / Mutter / Erou | 1 |
| 6 | PM 322406 | Screw / Schraube / Vis. | 3 |
| 7-1 | | see pos. 2 / siehe Pos.2 / voir pos. 2 | |
| 8 | PM 949611 | Screw / Schraube / Vis. M6 x 12 | 2 |
| 9 | PM 322409 | Washer / Scheibe / Rondelle M6 | 4 |
| 10 | PM 322410 | Tool rest complete / Auflage kompl. / Table complète | 2 |
| 11 | PM 322411 | Screw / Schraube / Vis. | 3 |
| 12 | PM 322412 | Washer / Scheibe / Rondelle | 3 |
| 15 | PM 322015 | Screw / Schraube / Vis. | 6 |
| 16 | PM 320035 | Spring washer / Federring / Rondelle ressort | 1 |
| 17 | PM 322028 | Flange right / Flansch rechts / Flasque droit | 1 |
| 18 | 985483 | Ball bearing / Kugellager / Roulement | 1 |
| 19 | PM 320038 | Fan / Ventilator / Ventilateur | 1 |
| 20 | PM 322420 | Rotor / Anker / Induit | 1 |
| 21/22 | PM 322025 | Field complete / Feld / Inducteur complet | 1 |
| 25 | PM 002301 | Ball bearing / Kugellager / Roulement ... 6205 | 1 |
| 26 | PM 322020 | Flange left / Flansch links / Flasque gauche | 1 |
| 30 | PM 320050 | Rubber / Gummi / Gomme | 1 |
| 34 | PM 320006 | Screw / Schraube / Vis. | 2 |
| 35 | PM 322435 | Screw / Schraube / Vis. | 1 |
| 38 | PM 320054 | Screw / Schraube / Vis. | 4 |
| 39 | PM 320052 | Spring washer / Federring / Rondelle ressort | 4 |
| 40 | PM 320051 | Washer / Scheibe / Rondelle | 4 |
| 41 | PM 320052 | Spring washer / Federring / Rondelle ressort | 4 |
| 42 | PM 322095 | Socle / Fussgehäuse / Carcasse de base | 1 |
| 43 | PM 320003 | Plate / Platte / Plaque | 1 |
| 44 | PM 320002 | Power cord clip / Kabelklemme / Pince de fixation | 1 |
| 45 | | Power cord / Kabel / Câble 4x1,5mm2 | 1 |
| 46 | PM 322446 | Screw / Schraube / Vis. | 2 |
| 47 | PM-371652 | Switch JD3 400V / Schalter JD3 400V / Interrupteur JD3 400V | 1 |
| 48 | PM 320061 | Rubber foot / Fuss / Pied gommé | 4 |
| 49 | PM 320060 | Cover / Abdeckung / Recouvrement | 1 |
| 50 | PM 321050 | Adjusting screw / Stellschraube / Vis de réglage | 1 |
| 51 | PM 321249 | Spring / Feder / Ressort | 1 |
| 52 | PM 321031 | Washer / Scheibe / Rondelle | 1 |
| 53 | PM 321043 | Support / Lagerbock / Support | 1 |
| 54 | PM 321044 | Pin / Stift / Goupille | 1 |
| 55 | PM 321202 | Spring / Feder / Ressort | 1 |
| 56 | PM 321042 | Shaft / Bandradachse / Axe roue ruban | 1 |
| 57 | PM 321041 | Snap ring / Seegerring / Circlips | 1 |
| 58 | 855174 | Ball bearing / Kugellager / Roulement | 2 |
| 59 | PM 321040 | Sleeve / Büchse / Boîte | 1 |
| 60 | 939544 | Snap ring / Seegerring / Circlips | 1 |
| 61 | PM 321037 | Wheel / Walze / Rouleau | 1 |
| 62 | PM 321257 | Nut / Mutter / Erou | 1 |
| 63 | PM 321258 | Adjusting nut / Stellmutter / Erou de réglage | 1 |

Parts List For JMG-100 Belt & Wheel Grinder

| Index No. | Part No. | Description / Beschreibung / Description | Qty |
|--------------|-------------|---|-----|
| 64 | PM 321059 | Support / Auflage / Support..... | 1 |
| 65 | PM 321060 | Nut / Mutter / Ecrou..... | 2 |
| 66 | 949457 | Spring washer / Federring / Rondelle ressort..... | 2 |
| 67 | PM 321062 | Excenter / Excenter / Excentrique | 1 |
| 68 | PM 321065 | Spindle / Welle / Arbre | 1 |
| 69 | PM 321049 | Rod / Achse / Axe | 1 |
| 70 | PM 315050 | Knob / Handknopf / Poignée | 1 |
| 72 | PM 321201 | Screw / Schraube / Vis..... | 1 |
| 73 | PM 321052 | Washer / Scheibe / Rondelle..... | 1 |
| 74 | PM 321051 | Cover / Abdeckung / Recouvrement..... | 1 |
| 77 | PM 322177 | Axe / Bolzen / Goupille..... | 1 |
| 78 | PM 322111 | Screw / Schraube / Vis..... | 4 |
| 79 | PM 322112 | Washer / Scheibe / Rondelle..... | 4 |
| 80 | PM 322110 | Guard / Schutz / Protection | 1 |
| 81 | PM 322113 | Guard / Schutz / Protection | 1 |
| 82 | PM 322056 | Grinding supprot / Schleifführung / Guide..... | 1 |
| 83 | PM 322055 | Spacer rod / Distanzstück / Pièce de distance..... | 1 |
| 84 | PM 322047 | Arm / Schleifarm / Bras | 1 |
| | PM 321102 | Arm compl. / Schleifarm komplett / Bras complet..... | 1 |
| 85 | PM 2117 | Screw / Schraube / Vis..... | 1 |
| 86 | PM 322069 | Rubber wheel / Gummiwalze / Rouleau.. .. | 1 |
| 88 | PM 322068 | Nut / Mutter / Ecrou..... | 1 |
| 89 | PM 321083 | Screw / Schraube / Vis..... | 1 |
| 90 | PM 321072 | Halter / Porteur | 1 |
| 91 | PM 321073 | Table / Tisch / Table | 1 |
| 92/93 | PM 322201 | Cover compl. / Abdeckung komplett / Protéction complète | 1 |
| 94 | PM 322108 | Screw / Schraube / Vis..... | 3 |
| 95 | PM 949432 | Screw / Schraube / Vis..... M6 x 12..... | 1 |

JMG-100

1791294T

| | colour of strands | Litzenfarben | couleur des cordons |
|------|-------------------|--------------|---------------------|
| BK | black | schwarz | noir |
| WH | white | weiß | blanc |
| BU | blue | blau | bleu |
| YE | yellow | gelb | jaune |
| RD | red | rot | rouge |
| BN | brown | braun | brun |
| GY | gray | grau | gris |
| GNYE | green-yellow | grün-gelb | vert-jaune |
| OG | orange | orange | orange |
| VT | violet | violett | violet |

Electrical parts list / Elektro-Stückliste / Liste de piece électrique

| | Function / Funktion / Fonction | Specification | Type |
|----|---|-----------------------------------|----------|
| FU | Mains fuse / Netzsicherugn / Fusible | 40V, 6A | |
| | Power cord / Netzkabel / Câble | VCTF 4x0.75mm ² , | |
| KA | ON-OFF Switch / Ein-Aus Schalter / Interrupteur Marche-Arret | 400VAC, 10A | EN 60204 |
| XP | Terminal / Klemmenleiste / Serrage | 400V, 15A, 1.5mm ² max | VDE 0606 |
| M | Motor / Motor / Moteur | ~400V, 50Hz, 550W, 2P | EN 60204 |
| PE | Ground / Erdung / Masse | | |

3~400V / 50Hz

