

DESCRIPTION

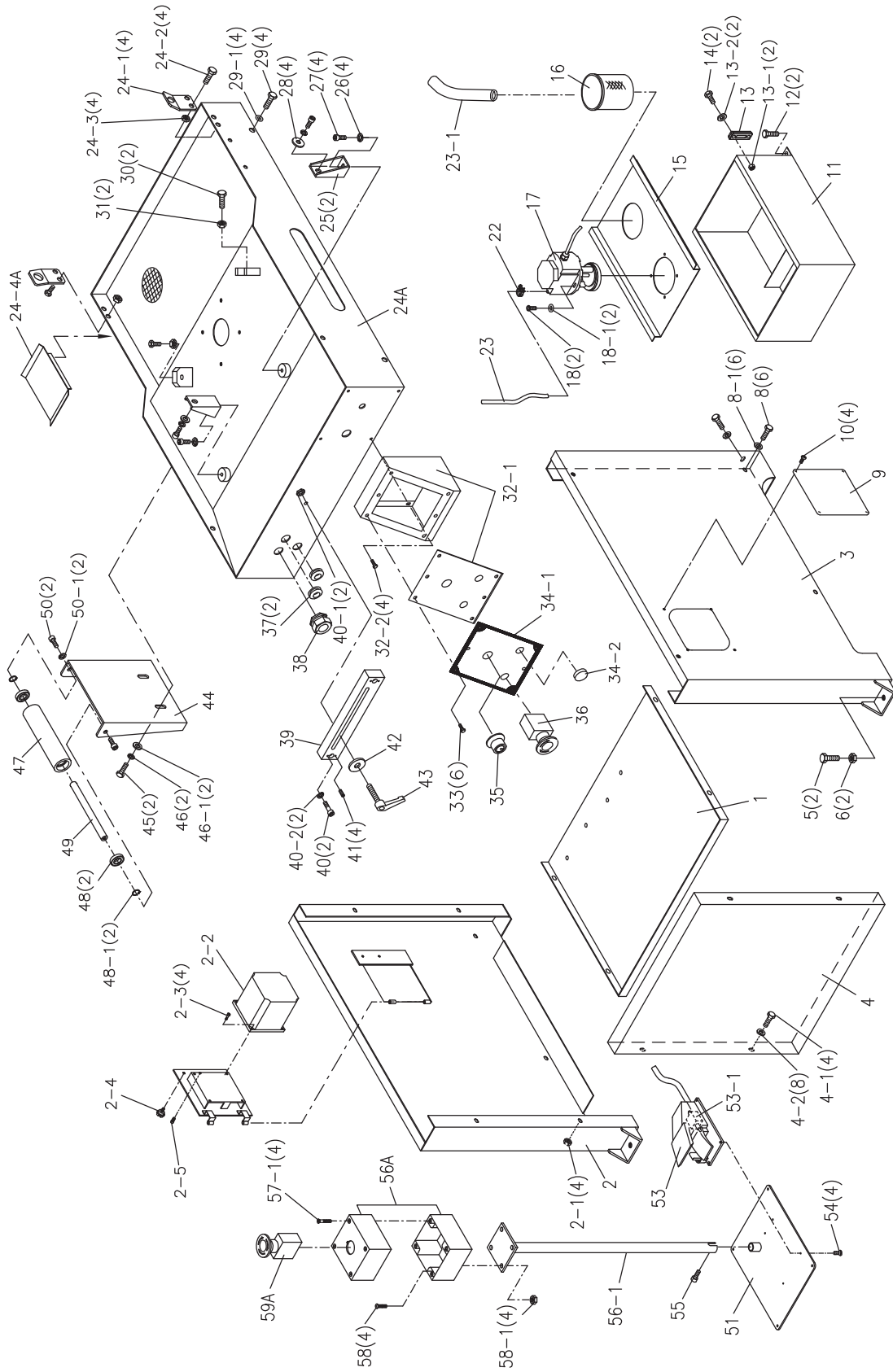
1. Product: SX-823DGSVI / SX-827DGSVI
2. Stock no : SX-823DGSVI / SX-827DGSVI 400V version
3. Brand : PRPMAC
4. Description: SX-823DGSVI, 225 mm Band saw (with AC motor, variable speed for 20~85 m/min)
Description: SX-827DGSVI, 270 mm Band saw (with AC motor, variable speed for 20~85 m/min)

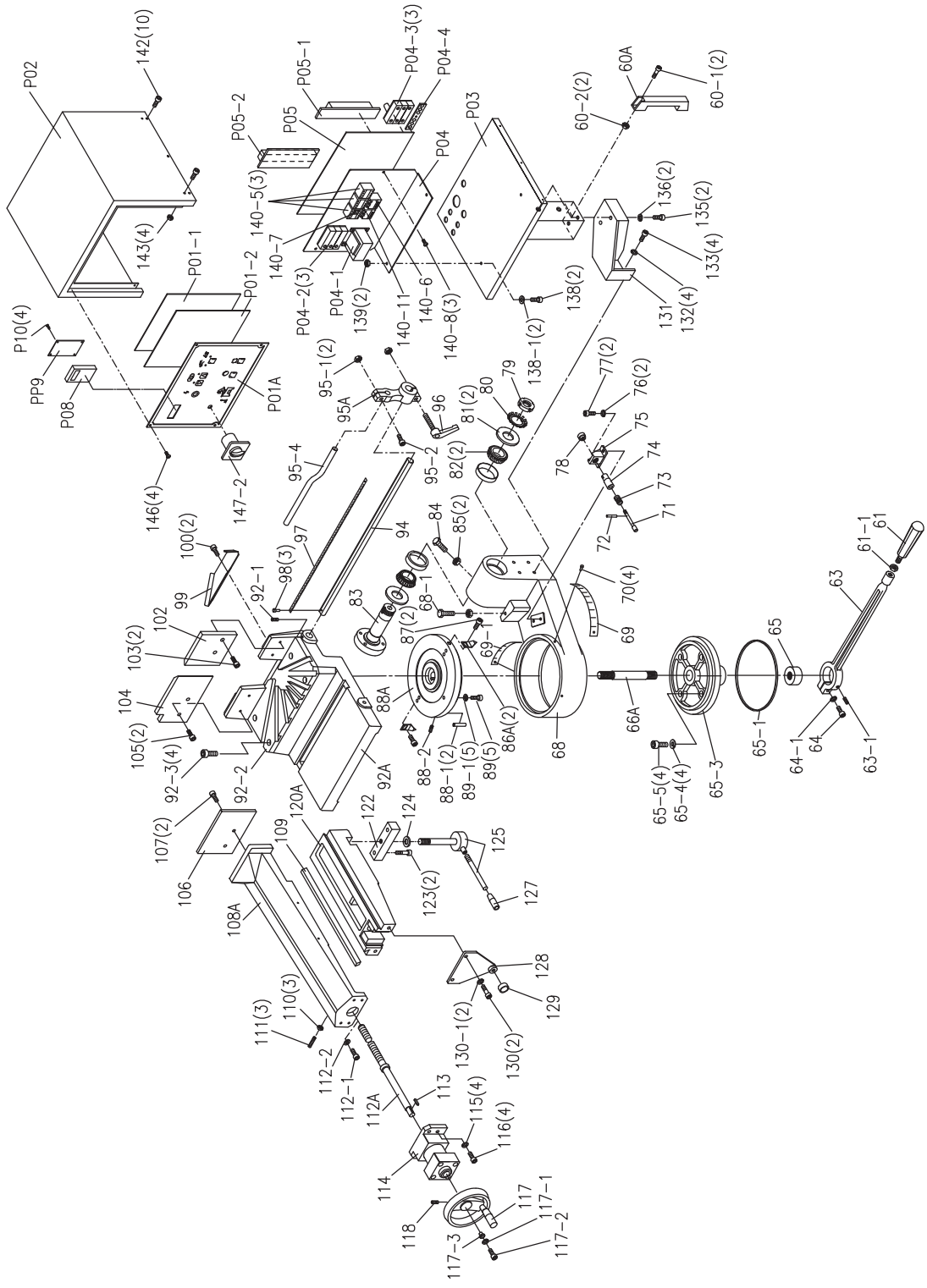
SX-823DGSVI

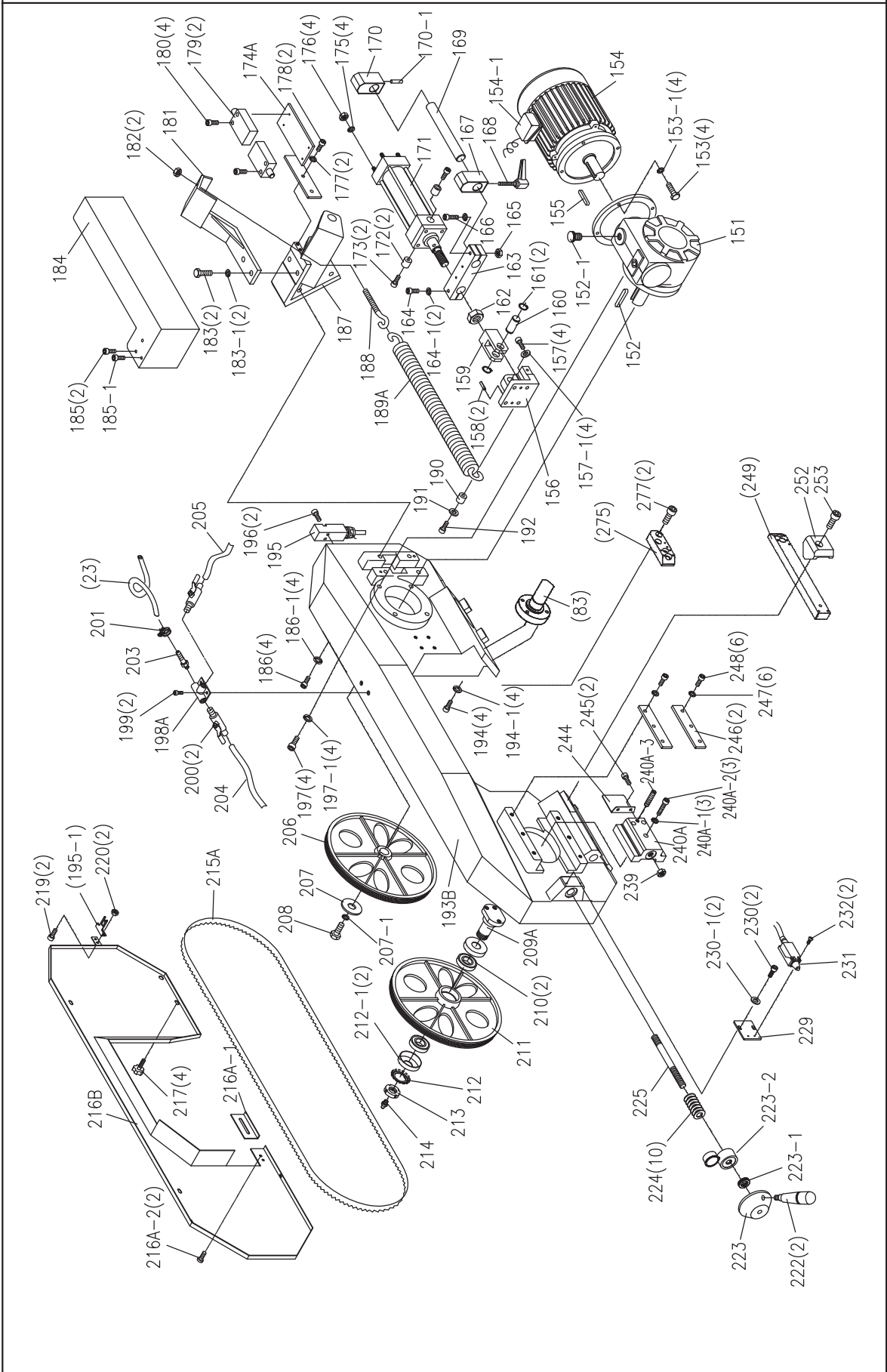


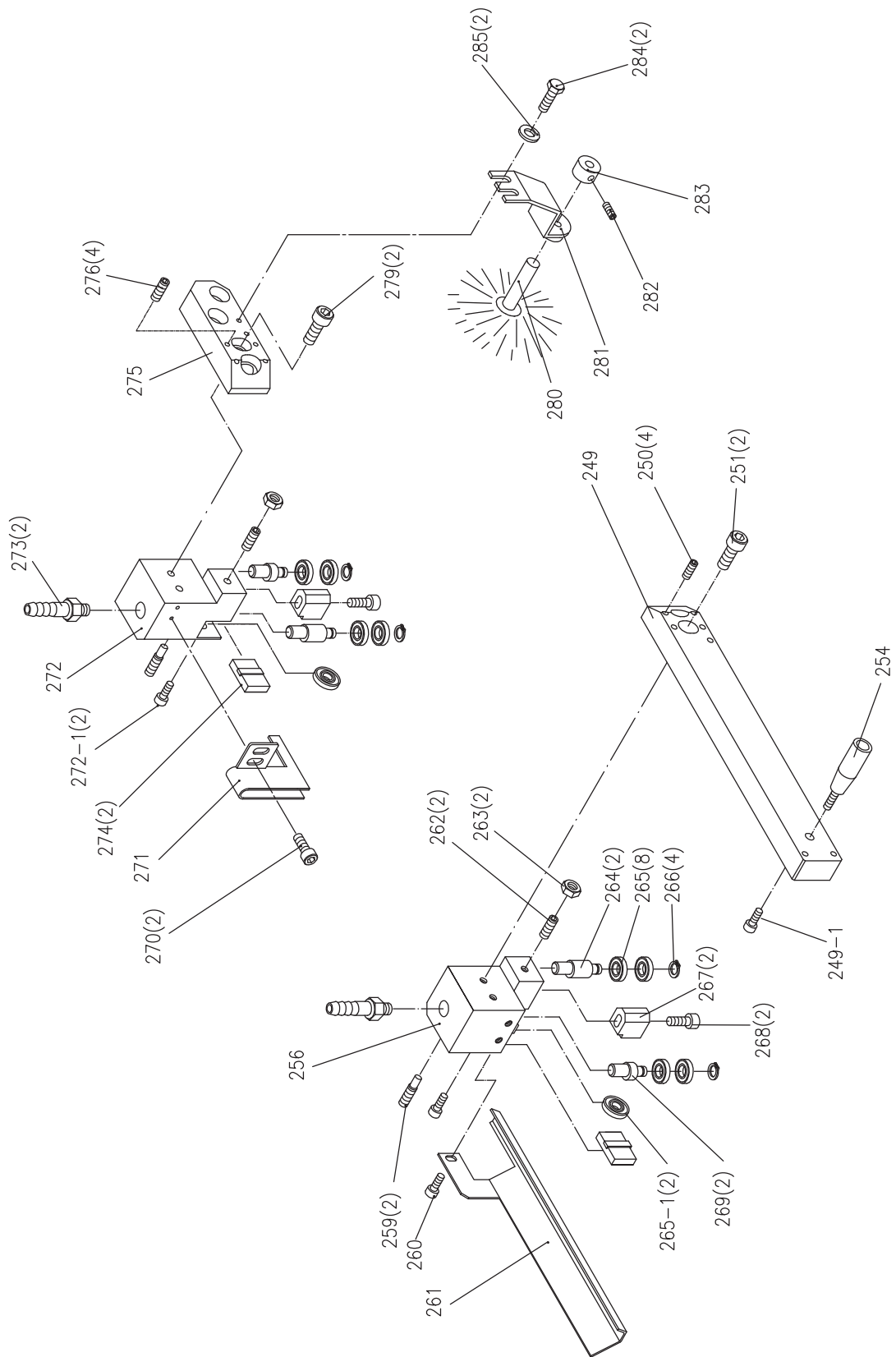
SX-827DGSVI

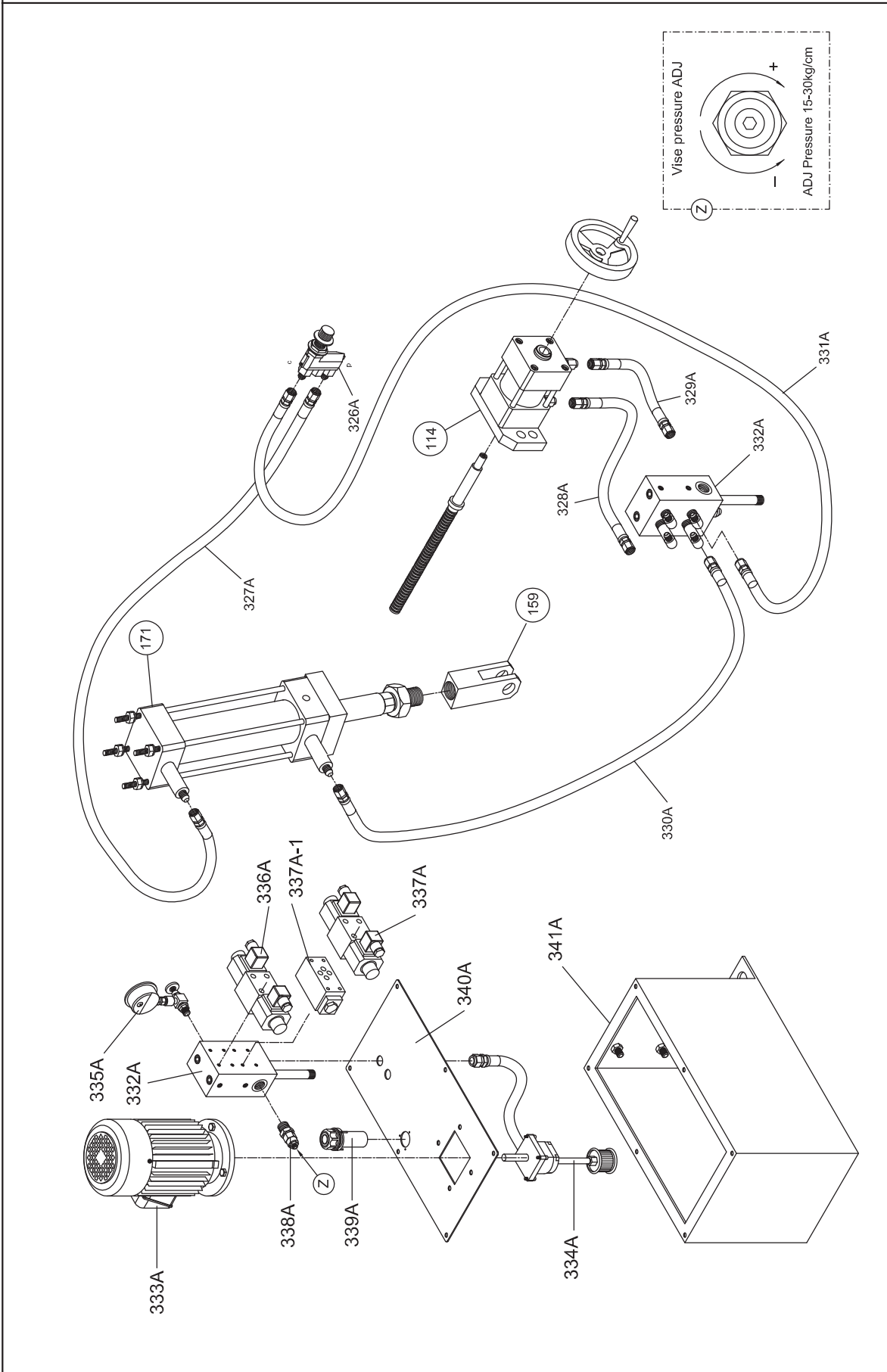












001	PM-827001	Base(Bottom Plate)/ Grundplatte / Base	032-1	PM-827032-1	Inverter control box set / Gehäuse / Carcasse
002	PM-827002	Base(Left Part) / Seitenwand L / Paroi G	032-2	PM-827032-2	Screw / Schraube / Vis M5x8
002-1	PM-827002-1	Nut / Mutter / Ecrou M8	033	PM-827033	Screw / Schraube / Vis M5x10
002-2	PM-827599	Inverter / Frequenzumformer / Inverter	034-1	PM-827034-1	Control box Panel / Schalterplatte / Plateau interrupteur
002-3	PM-827002-3	Screw / Schraube / Vis M5x12	034-2	PM-827326A	Flow regulator / Absenkventil / Valve hydraulique de decente
002-4	PM-827002-4	Thumb screw / Schraube / Vis	035	PM-827035	Blade speed knob / Verstellknopf / Bouton de reglage
002-5	PM-827002-5	Screw / Schraube / Vis M5x8	036	PM-8232138-1	Emergency switch / Not-/Ausschalter / Inter Poing
003	PM-827003	Base(Rigth Part) / Seitenwand R / Paroi D	037	PM-823037-1	Plug / Stopfen / Truc (HP16,19,22,25)
004	PM-827004	Base (Front Part) / Seitenwand / Paroi	038	PM-823038-1	Plug / Stopfen / Truc (HP16,19,22,25)
004-1	PM-823012	Hex.Cap Bolt / Schraube / Vis M8x16	039	PM-823039	Track / Flansch / Support
004-2	PM-827004-2	Washer / Scheibe / Rondelle M8x18x2	040	PM-827040	Hex.Socket Cap Screw / Schraube / Vis M8x35
005	PM-827005	Hex. Cap Bolt / Schraube / Vis M12x40	040-1	PM-827002-1	Nut / Mutter / Ecrou M8
006	PM-823062	Nut / Mutter / Ecrou M12	040-2	PM-823115	Spring Washer / Federring / Rondelle M8
008	PM-823012	Hex.Cap Bolt / Schraube / Vis M8x16	041	PM-827041	Set Screw / Schraube / Vis M6x12
008-1	PM-827004-2	Washer / Scheibe / Rondelle M8x18x2	042	PM-823042	Washer / Scheibe / Rondelle
009	PM-823009	Plate / Abdeckung / Couvercle	043	PM-823043	Handle / Feststellgriff / Poignée M8x25
010	PM-827010	Hex.Socket / Schraube / Vis Cap Screw M5x8	044	PM-823044	Roller Stand / Halter / Support
011	PM-823011	Coolant Tank / Behälter / Réservoir	045	PM-823045	Hex. Cap Bolt / Schraube / Vis M12x25
012	PM-827012	Hex.Cap Bolt / Schraube / Vis M8x16	046	PM-823046	Spring Washer / Federring / Rondelle M12
013	PM-827013	Coolant Cauge / Anzeige / Verre niveau 3"	046-1	PM-823046-1	Washer / Scheibe / Rondelle M12x28x3
014	PM-823014	Hex. Cap Bolt / Schraube / Vis M10x30	047	PM-823047	Roller / Rolle / Rouleau
015	PM-823015	Tank Cover / Platte / Plaque	048	PM-823048	Ball Bearing / Kugellager / Roulement 6004ZZ
016	PM-823016	Filter / Filter / Filtre	048-1	PM-823048-1	C-Ring / Sicherungsring / Circlip S-20
017	PM-823017	Pump / Pumpe / Pompe	049	PM-823049	Roller Shaft / Welle / Axe
018	PM-823018	Hex.Socket Cap Screw / Schraube / Vis M6x25	050	PM-823027	Hex.Socket Cap Screw / Schraube / Vis M10x20
018-1	PM-827018-1	Flat Washer / Scheibe / Rondelle M 6x13x1	051	PM-827051	Pedal plate / Platte / Support
022	PM-823022	Hose Clamp / Briede / Collier 13mm	053	PM-827053	Pedal / Fusspedal / Pedal
023	PM-827023	Hose / Schlauch Tube 5/16"	053-1	PM-8232138-3	Micro switch / Mikroschalter / Inter micro
023-1	PM-827023-1	Hose / Schlauch / Tube 1"	054	PM-827054	Round head screw / Schraube / Vis M4x10
24A	PM-827024	Coolant and chip Tray / Spänewanne / Puces baignoire	055	PM-827055	Hex. socket cap screw / Schraube / Vis M6x8
024-1	PM-827024-1	Block Plate / Platte / Plaque	056A	PM-827056AK	Emergency switch box / Schalterkasten / Boîte interrupteur
024-2	PM-827024-2	Screw / Schraube / Vis	056-1	PM-827056-1	Pipe / Stange / Tige
024-3	PM-827024-3	Nut / Mutter / Ecrou	057-1	PM-827057-1	Flat head cross screw / Schraube / Vis
024-4A	PM-827024-4	Plate / Platte / Plaque	058	PM-827058	Hex. socket cap screw / Schraube / Vis M5x8
025	PM-823025	Mounting Bracket / Flansch / Support	058-1	PM-827058-1	Nut / Mutter / Ecrou M5
026	PM-823026	Spring Washer / Federring / Rondelle M10	059A	PM-823059	Emergency switch / Not-/Ausschalter / Inter poing
027	PM-823027	Hex.Socket Cap Screw / Schraube / Vis M10x20	060	PM-827060	Handle / Griff / Poignée
028	PM-823028	Flat Washer / Scheibe / Rondelle M10x25x2	060-1	PM-827060-1	Hex. socket cap screw / Schraube / Vis M8x20
029	PM-823029	Hex. Socket Cap Screw / Schraube / Vis M10x20	060-2	PM-827060-2	Nut / Mutter Ecrou M8
029-1	PM-823028	Flat Washer / Scheibe / Rondelle M10x25x2			
030	PM-823005	Hex. Cap Bolt / Schraube / Vis M12x40			
031	PM-823031	Nut / Mutter / Ecrou M12			

SX-827DGSVI

PROMAC®

061	PM-823061	Handle / Griff / Poignée	095-2	PM-823077	Hex.Socket Cap Screw / Schraube / Vis M8x25
061-1	PM-823062	Nut / Mutter / Ecrou M12	096	PM-823043	Handle / Feststellgriff / Poignée M8x25
063	PM-827063	Locking Lever / Spannhebel Levier	097	PM-823097	Scale / Messband / Scale
063-1	PM-823314	Set Screw / Schraube / Vis M10x16	098	PM-823098	Rivet / Niete / Rivet
064	PM-823064	Hex.Socket Cap Screw / Schraube / Vis M10x35	099	PM-827099	Chip Gutter / Späneabweiser / Canal
064-1	PM-823026	Spring Washer / Federring / Rondelle M10	100	PM-827100	Hex. Socket Cap Screw / Schraube / Vis M6x8
065	PM-823065	Shaft Nut / Mutter / Ecrou	102	PM-827099	No-Burr Jaw / Spannstockbacke / Mâchoire étou
065-1	PM-823065-1	Oil Seal / O-Ring / O-ring 4x675mm	103	PM-823103	Hex. Socket Cap Screw / Schraube / Vis
065-3	PM-827065-3	Disk / Drehflansch / Support	104	PM-827104	Counter Vise Jaw / Spannbacke / Mâchoire étou
065-4	PM-823115	Spring Washer / Federring / Rondelle M8	105	PM-827105	Hex. Socket Cap Screw / Schraube / Vis
065-5	PM-823065-5	Hex. Socket Cap Screw / Schraube / Vis M8x30	106	PM-827106	Vise Jaw / Spannbacke / Mâchoire étou
066A	PM-827066-A	Shaft / Achswelle / Arbre	107	PM-823107	Flat Head Machine Screw / Schraube / Vis M6x16
068	PM-827068	Swivel Arm / Drehteil / Support bras	108A	PM-827108-A	Vise / Spannstock / Eteau
068-1	PM-823068-1	Hex. Cap Bolt / Schraube / Vis	109	PM-823109	Dove tail Plate / Einstellleiste / Guide
069	PM-827069	Scale / Skala / Scale	110	PM-823110	Nut / Mutter / Ecrou M5
070	PM-823070	Rivet/ Niete / Rivet 2.3x4	111	PM-823111	Set Screw / Schraube / Vis M5x25
071	PM-823071	Pin / Stift / Goupille	112A	PM-827112-A	Screw / Schraube / Vis
072	PM-827072	Hollow Pin / Stift / Goupille 2.5x16	112-1	PM-827112-1	Hex.Socket Cap Screw / Schraube / Vis M8x16
073	PM-823073	Spring / Feder / Ressort 0.8x9x30mm	112-2	PM-827112-2	Washer / Scheibe / Rondelle M8
074	PM-823074	Bushing / Büchse / Boîte	113	PM-823112	Key / Keil / Clavette 5x5x15
075	PM-823075	Bracket / Halter / Support	114	PM-827114	Hydraulic cylinder / Hydraulikzylinder / Cylindre hydraulique
076	PM-823115	Spring Washer / Federring / Rondelle M8	115	PM-823115	Spring Washer / Federring / Rondelle M8
077	PM-823077	Hex.Socket Cap Screw / Schraube / Vis M8x25	116	PM-823130	Hex.Socket Cap Screw / Schraube / Vis M8x20
078	PM-823078	Knob / Griff / Bouton	117	PM-823117	Hand Wheel / Handrad / Manivelle 6 1/2"
079	PM-827079	Jam Nut / Mutter / Ecrou M35	117-1	PM-82117-1	Spring Washer / Federring / Rondelle M6
080	PM-827080	Star Washer / Sicherungsscheibe / Rondelle M35	117-2	PM-823018	Hex.Socket Cap Screw / Schraube / Vis M6x25
081	PM-823081	Anti-Dust Cover / Abdeckung / Couvercle M35	117-3	PM-823117-3	Bushing / Büchse / Douille
082	PM-823082	Ball Beaning / Rollenlager / Roulement #32007	118	PM-823118	Set Screw / Schraube / Vis M8x10
083	PM-827083	Shaft / Welle / Axe	120A	PM-827120-A	Vise Seat / Spannstock Grundstock / Eteu fixe
084	PM-827084	Hex. Cap Bolt / Schraube / Vis	122	PM-823122	Vise Setting Plate / Flansch / Flasque
085	PM-823085	Nut / Mutter / Ecrou M10	123	PM-827123	Hex. Socket Cap Screw / Schraube / Vis M10x30
086A	PM-823086-A	Indicator / Pfeil / Flèche	124	PM-827124	Setting Washer / Scheibe / Rondelle
087	PM-823087	Hex.Socket Cap Screw / Schraube / Vis M5x8	125	PM-823125	Lock Lever Device / Spannbolzen / Axe blocage M16x190
088A	PM-827088-A	Cover / Flansch / Flasque	127	PM-823127	Handle / Griff / Poignée 1/2"
088-1	PM-827088-1	Hollow Pin / Stift / Goupille 2.5x20	128	PM-827128	Setting Plate / Platte / Support
088-2	PM-823118	Set Screw / Schraube / Vis M8x10	129	PM-823129	Bushing / Büchse / Douille
089	PM-827089	Hex. socket cap screw / Schraube / Vis M8x35	130	PM-823130	Hex.Socket Cap Screw / Schraube / Vis M8x20
089-1	PM-823130	Hex.Socket Cap Screw / Schraube / Vis M8x20	130-1	PM-823115	Spring Washer / Federring / Rondelle M8
092A	PM-827092-A	Table / Tisch / Table			
092-1	PM-827041	Set Screw / Schraube / Vis M6x12			
092-2	PM-827092-2	Changeable Plate / Tischeinsatzplatte / Plate insert table			
092-3	PM-823286-2	Hex. Socket Cap Screw / Schraube / Vis M8x16			
094	PM-823094	Bar-Stop-Rod / Anschlagstange / Guide barre			
095A	PM-823095	Stop Bar / Anschlag / Guide			
095-1	PM-827002-1	Nut / Mutter / Ecrou M8			

131	PM-823131	Electric Box Holder / Halter / Support	168	PM-827168	Handle / Klemmgriff / Poignée M8x25
132	PM-823115	Spring Washer / Federring / Rondelle M8	169	PM-827169	Stop bar / Stange / Barre
133	PM-823130	Hex.Socket Cap Screw / Schraube / Vis M8x20	170	PM-827170	Adjustable stop / Einstellblock / Support adjustable
135	PM-823208	Hex.Socket Cap Screw / Schraube / Vis M10x25	170-1	PM-827170-1	Set schrew / Schraube / Vis M8x10
136	PM-823026	Spring Washer / Federring / Rondelle M10	171	PM-827171	Hydraulic cylinder / Hydraulizylinder / Cylindre hydraulique
138	PM-827138	Hex.Socket Cap Screw / Schraube / Vis M6x25	172	PM-827172	Bushing / Büchse / Palier
138-1	PM-827138-1	Washer / Scheibe / Rondell M6	173	PM-827173	Hex.Socket Cap Screw / Schraube / Vis M12x20
139	PM-827139	Nut / Mutter / Ecrou M6	174A	PM-827174-A	Limit switch plate / Schalterplatte / Plate interrupteur
140-5	PM-827140-5	Magnetic switch / Kontaktschütze / Contacteur	175	PM-827157-1	Spring washer / Federring / Rondelle M8
140-6	PM-827140-6	Overload relay / Ueberlastrelais / Relais de protection	176	PM-827176	Nut / Mutter / Ecrou M8
140-7	PM-827140-7	Sub-connector / Kontaktklemme / Serrer câble	177	PM-827177	Spring washer / Federring / Rondelle M6
140-8	PM-827140-8	Hex. cap bolt / Schraube / Vis M6x15	178	PM-827178	Hex.Socket Cap Screw / Schraube / Vis M6x12
140-11	PM-827140-11	Overload relay / Ueberlastrelais / Relais de protection	179	PM-823179	Limit switch / Endschalter / Interrupteur limité
142	PM-827142	Hex.Socket Cap Screw / Schraube / Vis M5x8	180	PM-827180	Hex.Socket Cap Screw / Schraube / Vis M6x25
143	PM-827143	Nut / Mutter / Ecrou M5	181	PM-827181	Spring holder / Haltearm / Bra ressort
146	PM-827146	Round head screw / Schraube / Vis M5x10	182	PM-827176	Nut / Mutter / Ecrou M8
147-2	PM-823143	Main Connect Switch / Hauptschalter / Inter principal	183	PM-827183	Hex.Socket Cap Screw / Schraube / Vis M12x25
151	PM-827151	Reduction Unit / Getriebe / Boîte engrenage	183-1	PM-827183-1	Spring washer / Federring / Rondelle M12
152	PM-823152	Key / Keil / Clavette	184	PM-827184	Cylinder guard / Zylinderabdeckung / Protection cylindre
152-1	PM-823151-1	Vent Screw / Oelschraube / Vis huile	185	PM-827185	Hex.Socket Cap Screw / Schraube / Vis M6x60
153	PM-823153	Hex. Cap Bolt / Schraube / Vis M8x25	185-1	PM-827185-1	Hex.Socket Cap Screw / Schraube / Vis M5x8
153-1	PM-823115	Spring Washer / Federring / Rondelle M8	186	PM-823064	Hex.Socket Cap Screw / Schraube / Vis M10x35
154	PM-827154	Motor / Motor / Moteur	186-1	PM-823026	Spring Washer / Federring / Rondelle M10
155	PM-823155	Key / Keil / Clavette	187	PM-827187	Cylinder coupling / Halter / Support
156	PM-827156	Anchoring dowel / Halter / Support	188	PM-827188	Spring hook / Federhaken / Porte ressort
157	PM-827157	Hex.Socket Cap Screw / Schraube / Vis M8x25	189A	PM-827189-A	Spring / Rückzugfeder / Ressort de rappel
157-1	PM-827157-1	Spring washer / Federring / Rondelle M8	190	PM-827190	Setting bushing / Büchse / Palier
158	PM-827158	Hollow pin / Spannstift / Goupille 6x20	191	PM-827191	Washer / Scheibe / Rondelle M8
159	PM-827159	Coupling fork / Gabel / Fourchette	192	PM-827192	Hex. Socket Cap Screw / Schraube / Vis M8x35
160	PM-827160	Pin on fork / Bolzen / Boulon	193B	PM-827193-B	Saw arm / Sägearm / Bra de scie
161	PM-827161	C-ring / Sicherungsring / Circlip S-20	194	PM-823123	Hex. Socket Cap Screw / Schraube / Vis M10x35
162	PM-827162	Nut / Mutter / Ecrou	194-1	PM-823026	Spring Washer / Federring / Rondelle M10
163	PM-827163	Rod supporting block / Klemm- flansch / Support	195	PM-823195	Limit Switch / Endschalter / Inter micro
164	PM-827163	Hex.Socket Cap Screw / Schraube / Vis M10x30	195-1	PM-823195-1	Switch pin / Klemme / Serrage
164-1	PM-827164-1	Spring washer / Federring / Rondelle M10	196	PM-823196	Hex. Socket Cap Screw / Schraube / Vis M4x35
165	PM-827165	Nut / Mutter / Ecrou M10	197	PM-823197	Hex.Socket Cap Screw / Schraube / Vis M10x35
166	PM-827166	Hex.Socket Cap Screw / Schraube / Vis M10x40			
167	PM-827167	Adjustable stop / Einstellblock / Support adjustable			

SX-827DGSVI

PROMAC®

197-1	PM-823026	Spring Washer / Federring / Rondelle M10	240A-3	PM-823240A-4	Set Screw / Schraube / Vis M10x25
198	PM-823198	Pipe Fitting Seat / Verteiler / Raccord	244	PM-823244	Cover Plate / Abdeckung / Protection
199	PM-823199	Hex.Socket Cap Screw / Schraube / Vis M5x30	245	PM-823260	Hex.Socket Cap Screw / Schraube / Vis M6x8
200	PM-823200	Coolant Switch / Kühlmittelhahn / Robinet 1/4x5/16"	246	PM-823246	Gib / Führung / Guide
201	PM-823022	Hose Clamp / Briede / Collier 13mm	247	PM-823247	Spring Washer / Federring / Rondelle M8
203	PM-823203	Pipe Fitting / Anschluss / Raccord 1/4Px5/16"	248	PM-823130	Hex.Socket Cap Screw / Schraube / Vis M8x20
204	PM-823204	Hose / Schlauch / Tube 5/16"	249	PM-823249	Blade Guide Movable Rod / Führung / Guide support
205	PM-823205	Hose / Schlauch / Tube 5/16"	249-1	PM-823260	Hex.Socket Cap Screw / Schraube / Vis M6x8
206	PM-827206	Drive Flywheel / Bandrad / Roue	250	PM-827041	Set Screw / Schraube / Vis M6x12
207	PM-823207	Washer / Scheibe / Rondelle	251	PM-823130	Hex.Socket Cap Screw / Schraube / Vis M8x20
207-1	PM-823026	Spring Washer / Federring / Rondelle M10	252	PM-823252	Setting Bracket / Klammer / Serrage
208	PM-823208	Hex.Socket Cap Screw / Schraube / Vis M10x25	253	PM-823253	Hex. Socket Cap Screw / Schraube / Vis M12x50
209A	PM-827209-A	Idle Flywheel Shaft / Achse / Axe	254	PM-823254	Handle / Griff / Poignée 6x60
210	PM-827210	Roller Bearing / Rollenlager / Roulement #32007	256	PM-823256	Guide Bracket / Halter / Porte guide
211	PM-827211	Idle Flywheel / Banfrad / Roue	258	PM-823258	Nut / Mutter / Ecrou
212	PM-827212	Star Washer / Sicherungsscheibe / Rondelle M35	259	PM-823259	Set Screw / Schraube / Vis
212-1	PM-827212-1	Anti-Dust Cover / Schutzdeckel / Protection 35mm	260	PM-823260	Hex.Socket Cap Screw / Schraube / Vis M6x8
213	PM-827213	Nut / Mutter / Ecrou M35	261	PM-823261	Blade Guard / Schutz / Protection
214	PM-823214	Oil Inlet / Ölnippel / Huiler 1/16"	262	PM-827041	Set Screw / Vis / Schraube M6x12
215A	-	Saw blade / Sägeband / Lame	263	PM-823263	Nut / Mutter / Ecrou M6
216B	PM-827216	Blade Cover / Blattabdeckung / Couvercle	264	PM-823264	Centric Shaft / Exzenterwelle / Axe excentrique
216A-1	PM-827216-A1	Extension / Flansch / Flasque	265	855284	Ball Bearing / Kugellager / Roulement #608zz
216B	PM-827216-B	Round head screw / Schraube / Vis M6x8	265-1	855284	Ball Bearing / Kugellager / Roulement #608zz
217	PM-823217	Plum screw / Schraube / Vis M6x10	266	PM-823266	E-Ring / Sicherungssing / Circlip
219	PM-823219	Round Head Screw / Schraube / Vis M4x8	267	PM-823267	Blade Guide / HM Bandführung / Guide lame MD flexible
220	PM-823220	Nut / Mutter / Ecrou M4	268	PM-823268	Hex.Socket Cap Screw / Schraube / Vis M6x25
222	PM-823222	Handle / Griff / Poignée	269	PM-823269	Centric Shaft / Exzenterwelle / Axe excentrique
223	PM-823223	Handle Wheel / Griffansch / Flasque poignée	270	PM-823260	Hex.Socket Cap Screw / Schraube / Vis M6x8
223-1	PM-823223-1	Thrust Bearing / Drucklager / Roulement 51103	271	PM-823271	Blade Guard / Schutz / Protection
223-2	PM-823500	Blade Tension Gauge / Hydr. Bandspannung / Controlle pression hydraulique	272	PM-823272	Guide Bracket / Halter / Porte guide
224	PM-823224	Special Spring washer / Feder-scheibe / Rondelle ressort	272-1	PM-823260	Hex.Socket Cap Screw / Schraube / Vis M6x8
225	PM-827225	Tension shaft / Welle / Axe M16x230	273	PM-823273	Pipe Fitting / Anschluss / Raccord 1/4PX5/16"
229	PM-823229	Plate / Platte / Plateau	274	PM-823274	Blade Guide / HM Bandführung / Guide lame MD fix
230	PM-823230	Hex.Socket Cap Screw / Schraube / Vis M6x12	275	PM-827275	Ball Bearing Bracket / Halter / Support
231	PM-823231	Limit Switch / Endschalter / Inter micro AZ-8111	276	PM-827041	Set Screw / Schraube / Vis M6x12
232	PM-823232	Hex- Socket Cap Bolt / Schraube / Vis M4x25	277	PM-823027	Hex.Socket Cap Screw / Schraube / Vis M10x20
239	PM-823239	Nut / Mutter / Ecrou M16x2.0x24x8	279	PM-823130	Hex.Socket Cap Screw / Schraube / Vis M8x20
240A	PM-823240A-1	Slide Bracket / Schlitten / Flasque de bande	280	PM-823280	Brush / Bürste / Brosse 1 1/2"
240A-1	PM-823026	Spring Washer / Federring / Rondelle M10	281	PM-823281	Brush Clamp / Halter / Support
240A-2	PM-823240A-3	Hex.Socket Cap Screw / Schraube / Vis	282	PM-823282	Set Screw / Schraube / Vis M5x5
			283	PM-823283	Set Bushing / Büchse / Palier

284	PM-823284	Hex. Cap Screw / Schraube / Vis M6x12	P01A	PM-827P041A	Control panel / Bedienplatte / Plate interrupteur
285	PM-827018-1	Flat Washer / Scheibe / Rondelle M 6x13x1	P01-1	PM-827P01-1	Main board / Hauptplatine / Carte principale
326A	PM-827326-A	Flow control / Absenkventil / Valve descente	P02	PM-827P02	Electric box cover / Abdeckung / Couvercle
327A	PM-827327-A	Hose / Hydraulikschlauch / Tuyeau hydraulique 2.5m	P03	PM-827P03	Electric box platform / Fussplatte / Support
328A	PM-827328-A	Hose / Hydraulikschlauch / Tuyeau hydraulique 2.0m	P04	PM-827P04	Electric parts plate / Platte / Support
329A	PM-827329-A	Hose / Hydraulikschlauch / Tuyeau hydraulique 2.0m	P04-1	PM-823146-2	Transformer / Transformator / Transformateur (PT57 S/SH/DS)
330A	PM-827330-A	Hose / Hydraulikschlauch / Tuyeau hydraulique 2.0m	P04-2	PM-823146-3	Fuse / Sicherungskasten / Boîte fusible
331A	PM-827331-A	Hose / Hydraulikschlauch / Tuyeau hydraulique 1.5m	P04-3	PM-827P04-3	Power in fuses / Sicherungen Eingang / Fuse
332A	PM-827332-A	Manifold / Steuerventil / Bloc valve	P04-4	PM-823146-7	Grounding Plate / Erdungsklemme / Serrage terre
333A	PM-823333	Motor / Pumpenmotor / Moteur hydraulique	P05	PM-827P05	Electric parts plate / Platte / Support
334A	PM-827334-A	Pump / Hydraulikpumpe / Pompe hydraulique	P05-1	PM-827P05-1	Dual terminal connector / Halter / Support
335A	PM-827335-A	Oil gauge / Druckmanometer / Manomètre pression hydraulique	P05-2	PM-827P05-2	Connector PC board / Anschlussstecker / Fiche de connection
336A	PM-823336-A	Solenoid / Hydraulikventil / Valve hydraulique 2D2	P08	PM-827P08	Blade speed indicator / Digitalanzeige / Indicateur digital
337A	PM-823337-A	Solenoid / Hydraulikventil / Valve hydraulique 3C4	P09	PM-827P09	Indicator plate / Platte / Support
337A-1	PM-827337-A1	Pilot check / Ventilblock / Bloc valve	P10	PM-827P10	Hex.Socket Cap Screw / Schraube / Vis M3
338A	PM-827338A	Reducing / Druckregulierer / Regulateur pression hydraulique	Blades / Sägebänder / Lames 3160x27x0.9mm		
339A	PM-827339A	Oil fill port / Entlüftungsschraube / Boulon	2090		10/14 T/Z/D
340A	PM-827340A	Tank cover / Tankdeckel / Couvercle réservoir	2091		6/10
341A	PM-827341A	Tank / Behälter / Réservoir	2092		5/8
			2093		4/6
			Weiter Zubehöre finden Sie unter www.PROMAC.ch		